

# GENTING DREAM ITINERARY

15 JUN 2022 – 28 APR 2023

## 2 NIGHTS GETAWAY CRUISE (WED)

JUN 15 22 29      AUG 03 10 17 24 31  
 JUL 06 13 20 27      SEP 07 14 21 28

DAY	DESTINATION	ETA	ETD
Wed	Singapore	-	9pm
Thu	High Seas	-	-
Fri	Singapore	9am	-

## 2 NIGHTS MELAKA CRUISE (WED)

OCT 05 19      JAN 18      APR 05 19  
 NOV 02 16 30      FEB 01 15  
 DEC 14 28      MAR 01 22

DAY	DESTINATION	ETA	ETD
Wed	Singapore	-	9pm
Thu	Melaka (Port Dickson)	8am	8pm
Fri	Singapore	11pm	-

## 2 NIGHTS KUALA LUMPUR CRUISE (WED)

OCT 12 26      JAN 25      APR 12 26  
 NOV 09      FEB 08 22  
 DEC 07      MAR 08 29

DAY	DESTINATION	ETA	ETD
Wed	Singapore	-	9pm
Thu	Kuala Lumpur (Port Klang)	10am	9pm
Fri	Singapore	11am	-

## 2 NIGHTS WEEKEND GETAWAY CRUISE (FRI)

JUN 17 24

DAY	DESTINATION	ETA	ETD
Fri	Singapore	-	8pm
Sat	High Seas	-	-
Sun	Singapore	9am	-

## 2 NIGHTS BINTAN CRUISE (FRI)

JUL 01 08 15 22 29      JAN 20 27  
 AUG 05 12 19 26      FEB 03 10 17 24  
 SEP 02 09 16 23 30      MAR 03 10 17 24 31  
 OCT 07 14 21 28      APR 07 14 21 28  
 NOV 04 11 18 25  
 DEC 02 09 16 23 30

DAY	DESTINATION	ETA	ETD
Fri	Singapore	-	9pm
Sat	Bintan Island	8am (7am) 10pm (9pm)	-
Sun	Singapore	10am	-

## 3 NIGHTS ESCAPE CRUISE (SUN)

JUN 19 26      AUG 07 14 21 28  
 JUL 03 10 17 24 31      SEP 04 11 18 25

DAY	DESTINATION	ETA	ETD
Sun	Singapore	-	9pm
Mon	High Seas	-	-
Tue	High Seas	-	-
Wed	Singapore	9am	-

## 3 NIGHTS PENANG-LANGKAWI CRUISE (SUN)

OCT 02 16 20      JAN 15 29      APR 02 16  
 NOV 13 27      FEB 12 26  
 DEC 11 25      MAR 19

DAY	DESTINATION	ETA	ETD
Sun	Singapore	-	5pm
Mon	Penang	1.30pm	10.30pm
Tue	Langkawi	7am	4pm
Wed	Singapore	2pm	-

## 3 NIGHTS PHUKET CRUISE (SUN)

OCT 09 23      JAN 22      APR 09 23  
 NOV 06      FEB 05 19  
 DEC 04      MAR 05 26

DAY	DESTINATION	ETA	ETD
Sun	Singapore	-	5pm
Mon	Phuket	7pm (6pm)	-
Tue	Phuket	-	12pm (11am)
Wed	Singapore	2pm	-

## 5 NIGHTS PENANG-PHUKET-LANGKAWI-KUALA LUMPUR CRUISE (SUN)

NOV 20

DAY	DESTINATION	ETA	ETD
Sun	Singapore	-	5pm
Mon	Penang	1.30pm	11.30pm
Tue	Phuket (Patong Bay)	12pm (11am)	11.59pm (11pm)
Wed	Langkawi	10am	8pm
Thu	Kuala Lumpur (Port Klang)	10am	8pm
Fri	Singapore	12pm	-

## 5 NIGHTS SURABAYA-NORTH BALI CRUISE (SUN)

DEC 18

DAY	DESTINATION	ETA	ETD
Sun	Singapore	-	5pm
Mon	High Seas	-	-
Tue	Surabaya	8am (7am)	5pm (4pm)
Wed	North Bali (Celukan Bawang)	6am	5pm
Thu	High Seas	-	-
Fri	Singapore	1pm	-

## 5 NIGHTS MELAKA-PENANG-PHUKET CRUISE (SUN)

MAR 12

DAY	DESTINATION	ETA	ETD
Sun	Singapore	-	6pm
Mon	Melaka (Port Dickson)	8am	7pm
Tue	Penang	12pm	11pm
Wed	Phuket	11am (10am)	-
Thu	Phuket	-	1am (12am)
Fri	Singapore	11am	-

DESTINATIONS



RESORTS WORLD CRUISES  
 PRESENTS  
**GENTING DREAM**  
 SAILING JUN 2022 - APR 2023

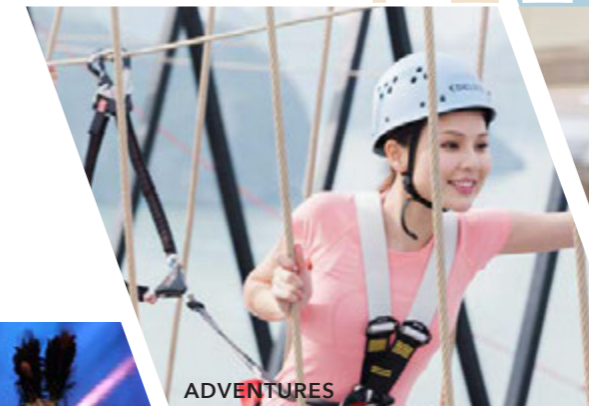
A BRAND NEW  
 ELEVATED  
**EXPERIENCE**



( ) denotes local time  
 Information is correct at time of print. Resorts World Cruises reserves the right to change the itinerary & destination ports without prior notice.  
 V1



What's your  
**PLEASURE?**



ADVENTURES



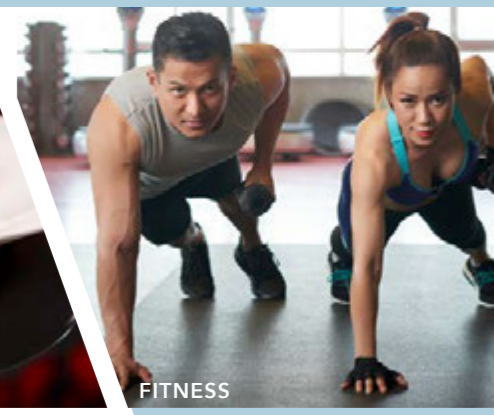
SHOPPING



ENTERTAINMENT



FOOD



FITNESS



MUSIC

Welcome aboard

# GENTING DREAM

## LIVE LARGE

This is travel that's in your face. Big moments. Big memories.  
Good times you'll talk about long after you disembark.  
We don't do timid. We don't do rigid.  
We provide the stage. You seize the moment.

This is travel that honours your spirit of adventure.

**This is experience elevated.**

Your experience on board Genting Dream is anything and everything you make of it. Pack your day, live it up, wind things down, thrill or chill.

**We'll make it happen.**

**Hours of exploration for the kids**

**Find your inner adventure junkie**

**Get a little retail therapy**

**Step into the lap of luxury**

**BUFFET hello!**

**Work up that sweat**



# A RESORT ON THE HIGH SEAS

Genting Dream has been outfitted with every amenity and comfort you could imagine for a cruise that you'll return for time and again.

**It's a city on water where the view changes every day!**

# THE LONG & SHORT OF GENTING DREAM

At 335m end to end, we're bigger than a skyscraper and way more fun.

Gross Tonnage	: 150,695 tons
Length	: 335m
Width	: 40m
Decks	: 18
Passenger Capacity	: 3,352 (lower berth)
Staterooms	: 1,674
Manufacturer	: Meyer Werft, Germany
100% Fresh air ventilation system	



**Want a closer look?**  
Take a virtual 360° tour of Genting Dream.

## What a day on GENTING DREAM looks like...



1

**THE PALACE**  
An exclusive all-suite, all-inclusive enclave with private facilities and European-style butlers. It is a ship-within-a-ship boutique hotel for connoisseurs of true luxury and hospitality.



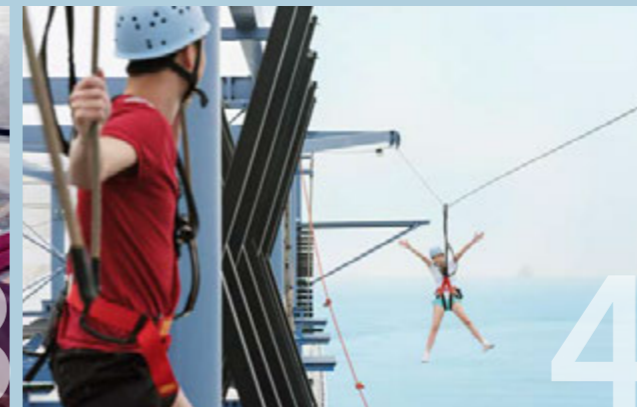
2

**THE LIDO**  
Our buffet-style restaurant with a smorgasbord of international and halal cuisine including vegetarian and non-vegetarian Indian dishes.



3

**WATERSLIDE PARK**  
Get drenched in fun on one of our six different waterslides.



4

**ROPE COURSE & ZIPLINE**  
Feel the thrill of gliding above the ocean on a 35-metre zipline.



5

**ZODIAC THEATRE**  
Enjoy live production shows from our acclaimed entertainment team.



6

**BAR CITY**  
Sit back and enjoy world-renowned vintages, premium Scotch whiskies, cocktails or bubbly while we entertain you with performances and live bands.



7

**CRYSTAL LIFE SPA**  
Rejuvenate mind, body and spirit in our Asian and Western-style spas where you can also enjoy a selection of healthy meals and beverages.



8

**THE BOUTIQUES**  
Splurge on International luxury brands at our boutiques or outlet store.



9

**RESORTS WORLD BEACH CLUB**  
There's party going on somewhere! Dive in at one of our famous pool parties or dance till dawn to the beat of our guest DJs at Resorts World Beach Club.



10

**LITTLE DREAMERS CLUB**  
Leave the kids with us while you explore the ship. They'll love our exciting line up of activities and classes. For kids aged 2 to 12.

Our well-appointed staterooms up the ante on your stay with every comfort and convenience you'll need.

# ACCOMMODATIONS



**PALACE VILLA**  
Approx. 224 sq.m | Max Occupancy 6 | Deck 17  
1 King-size Bed + 1 Queen-size Bed + 1 Double Sofa Bed



**PALACE PENTHOUSE**  
Approx. 37/56 sq.m | Max Occupancy 4 - 6\* | Deck 13/16  
1 King-size Bed + 1 Double Sofa Bed / 1 Queen-size Bed + 2 Double Sofa Beds /  
1 Queen-size Bed + 1 Double Sofa Bed



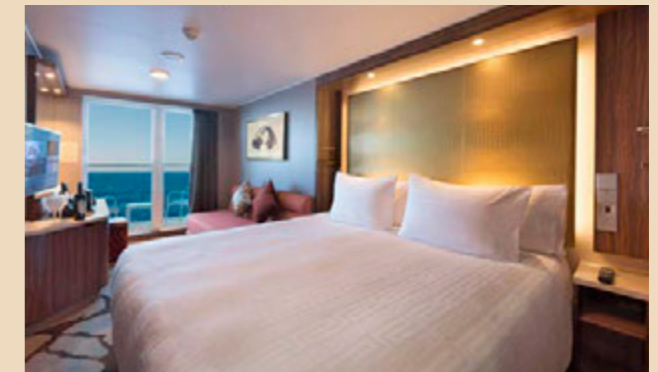
**PALACE DELUXE PREMIUM**  
From 41 - 61 sq.m | Max Occupancy 4 | Deck 9/10/11/12/13/15  
1 King-size Bed + 1 Double Sofa Bed



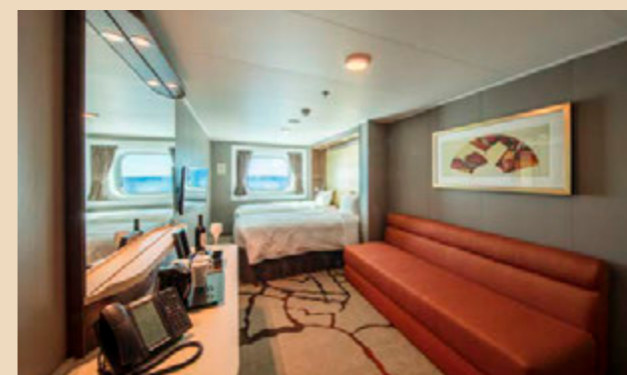
**PALACE DELUXE SUITE**  
From 41 sq.m | Max Occupancy 4 | Deck 15  
1 Queen-size Bed + 1 Double Sofa Bed



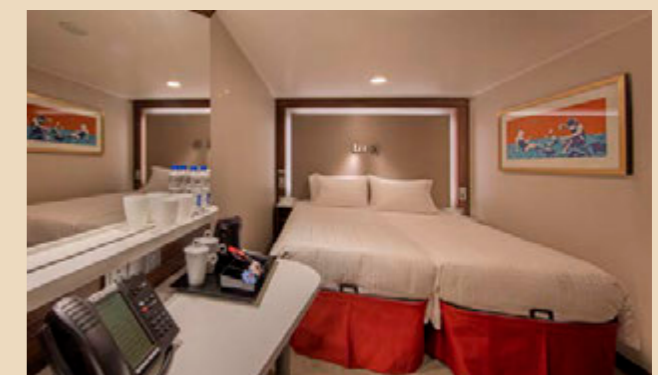
**PALACE SUITE**  
From 37 sq.m | Max Occupancy 4 | Deck 13/15/16/17  
1 Queen-size Bed + 1 Double Sofa Bed



<b>BALCONY / BALCONY DELUXE STATEROOM</b>	
From 20 sq.m	From 22 sq.m
Max Occupancy 3 - 4	Max Occupancy 3 - 4
Deck 8/9/10/11/12/13/15	Deck 8/9/10/11/12/13/15
1 Queen-size Bed +	1 Queen-size Bed +
1 Single Sofa Bed /	1 Single Sofa Bed /
1 Single Sofa Bed +	1 Single Sofa Bed +
1 Ceiling Pullman Bed	1 Ceiling Pullman Bed



**OCEANVIEW STATEROOM**  
From 16 sq.m | Max Occupancy 2 - 4 | Deck 5/9/10/11/12/13  
2 Single Beds / 2 Single Beds + 1 Single Sofa Bed / 2 Single Beds + 1 Single  
Sofa Bed + 1 Ceiling Pullman Bed

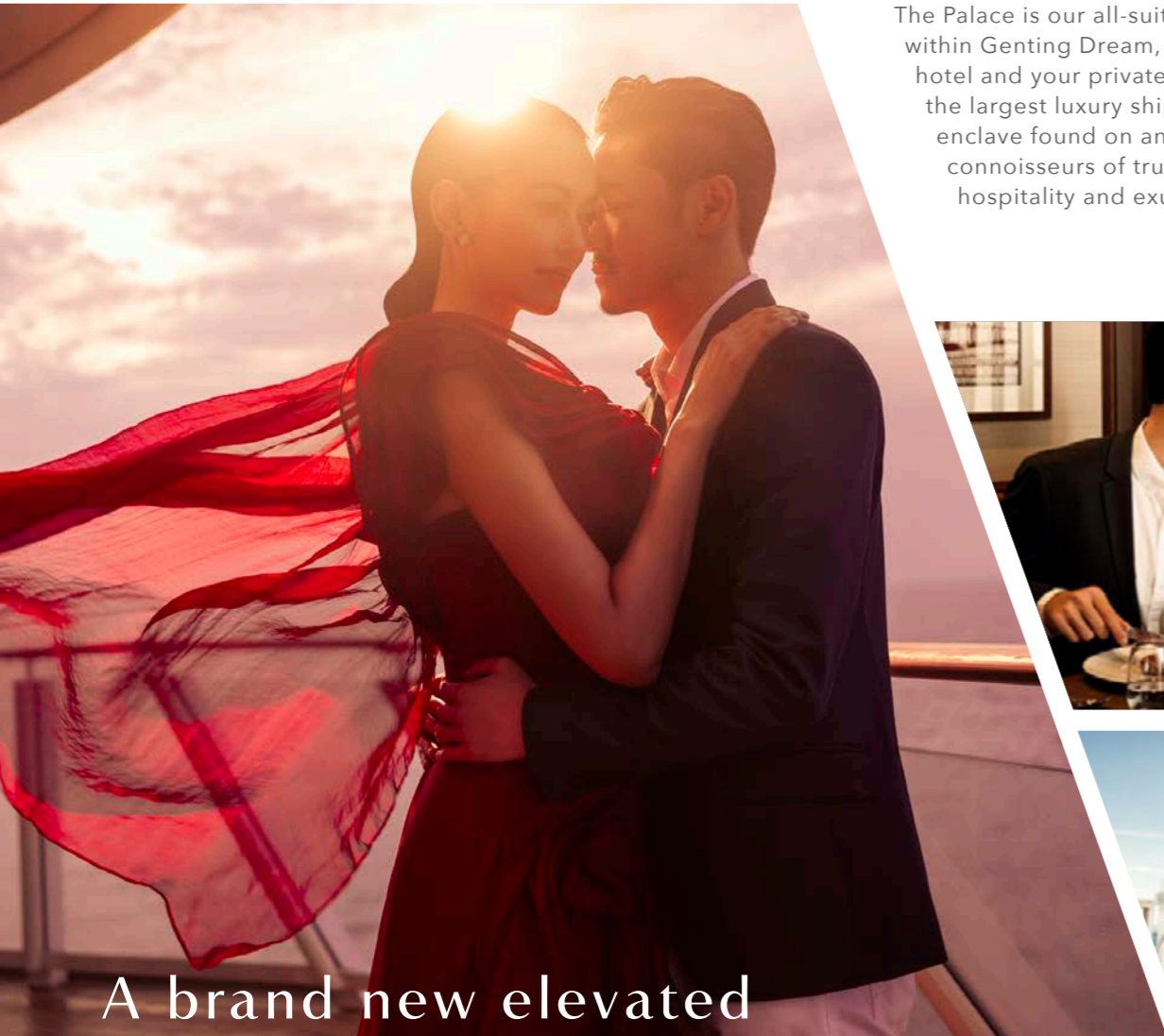


**INTERIOR STATEROOM**  
From 13 sq.m | Max Occupancy 2 - 4\* | Deck 5/8/9/10/11/12/13/15  
2 Single Beds / 2 Single Beds + 1 Ceiling Pullman Bed / 1 Single Bed +  
1 Pullman Bed + 1 Double Sofa Bed

\* The maximum occupancy of designated Palace Penthouses can be up to 6 guests upon request, subject to stateroom availability.  
\* The above image is for a stateroom configuration for 2 persons - other stateroom configurations for 3 persons and 4 persons are also available.

# THE PALACE

The Palace is our all-suite concept within Genting Dream, a boutique hotel and your private club on board - the largest luxury ship-within-a-ship enclave found on any cruise liner. For connoisseurs of true Asian luxury, hospitality and exuberant living.

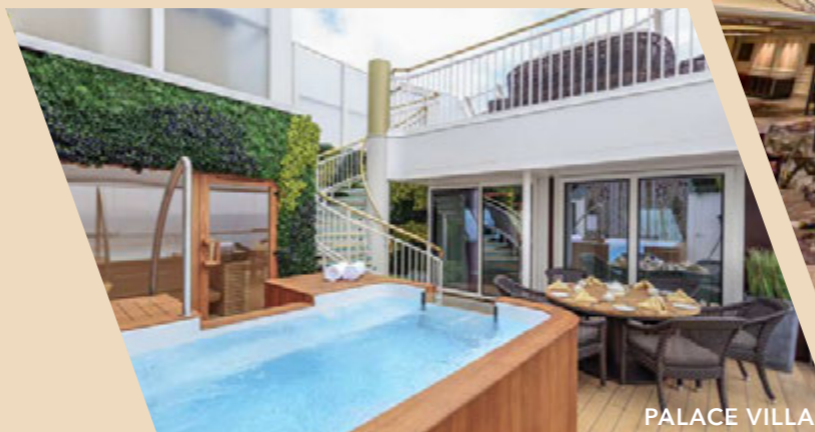


A brand new elevated

# EXPERIENCE



24-HOUR BUTLER CONCIERGE SERVICE



PALACE VILLA



PALACE LOUNGE



PRIVATE DECK & POOL

## ALL-INCLUSIVE PRIVILEGES

**All-Suite Accommodations**

**All-Butler Service**

**All-Indulgent Benefits**

**All-Encompassing Spaces**

### ON YOUR ARRIVAL

- Access to VIP lounge at terminal
- Priority check-in with butler assistance
- Fast track security clearance
- Priority luggage check-in and check-out with express delivery

### IN YOUR SUITE

- 24-hour butler concierge service
- Standard Wi-Fi package throughout cruise
- Dream Beds and luxurious Italian linens from Frette™
- Premium bath amenities
- Nespresso™ machine with gourmet coffee and tea
- Welcome minibar beverages and snacks
- Welcome fruit plate and delights
- Pressing service
- Fresh flower arrangement in Palace Penthouses and Villas

## WHEN YOU DINE

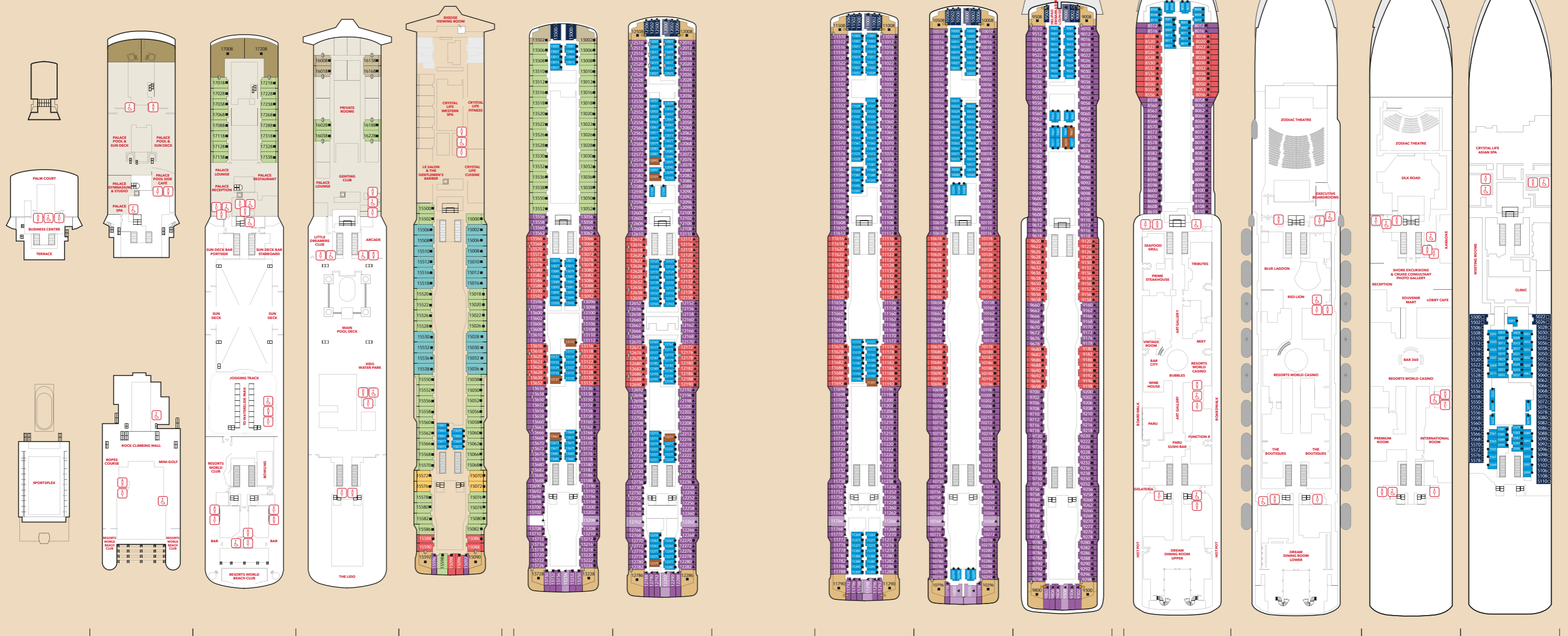
- Exclusive access to the Palace Restaurant with complimentary dining, including delicacies created with premium ingredients and exclusively featured food items
- Set meal entitlements at designated specialty dining restaurants
- Complimentary healthy meal options in the Palace Restaurant
- Happy Hour with complimentary drinks such as selected wines, beers, spirits and non-alcoholic beverages at selected venues
- Free-flow of chilled juices, Chinese and Japanese teas, and coffee throughout the day at selected venues
- Priority booking for Chef's Table and Vintage Room
- Complimentary in-suite dining for Palace Villa guests

## WHEN YOU EXPLORE

- Priority access to live production shows
- Selected exclusive Kids Programme for children between 2 and 12 years of age
- Bespoke enrichment programme featuring a highly curated collection of inspiring talks and events

Privileges are subject to change without prior notice.

# GENTING DREAM DECK PLANS

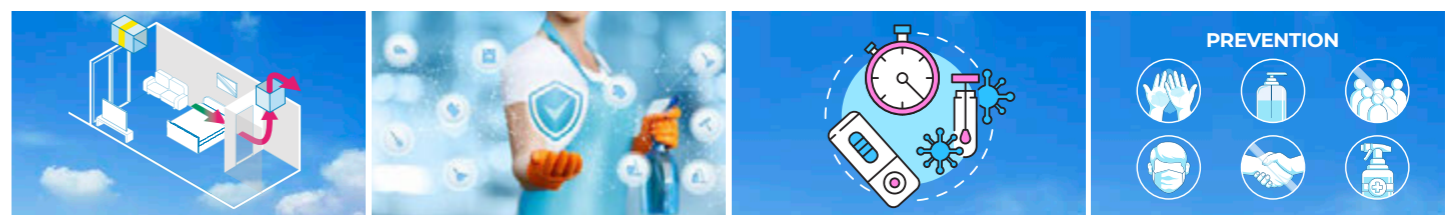


**DECK 19** Lounge, Business Centre & SportsPlex  
**DECK 18** The Palace, Ropes Course, Mini-Golf, Rock Climbing Wall & Resorts World Beach Club  
**DECK 17** The Palace, Suites, Resorts World Club & Resorts World Beach Club  
**DECK 16** Genting Club, Suites, Entertainment Venues, Water Activities & Restaurant  
**DECK 15** Western Spa, Fitness Centre, Suites, Balcony Deluxe, Balcony & Interior Staterooms  
**DECK 13** Suites, Balcony Deluxe, Balcony, Oceanview & Interior Staterooms  
**DECK 12** Suites, Balcony Deluxe, Balcony, Oceanview & Interior Staterooms  
**DECK 11** Suites, Balcony Deluxe, Balcony, Oceanview & Interior Staterooms  
**DECK 10** Suites, Balcony Deluxe, Balcony, Oceanview & Interior Staterooms  
**DECK 9** Suites, Balcony Deluxe, Balcony, Oceanview & Interior Staterooms, Helipad  
**DECK 8** Restaurants, Bars, Lounges & Multi-purpose Venue, Balcony Deluxe, Balcony & Interior Staterooms  
**DECK 7** Main Theatre, Executive Boardrooms, Restaurants, Retail Venues & Entertainment Venues  
**DECK 6** Main Lobby, Reception, Restaurant, Café, Lounges & Entertainment Venues  
**DECK 5** Asian Spa, Oceanview & Interior Staterooms

## CATEGORIES

- Palace Villa
- Palace Penthouse
- Palace Deluxe Premium
- Palace Deluxe Suite
- Palace Suite
- Palace Suite (Accessible)
- Balcony Deluxe Stateroom
- Balcony Stateroom
- Balcony Stateroom (Accessible)
- Oceanview Stateroom
- Oceanview Stateroom (Accessible)
- Interior Stateroom
- Interior Stateroom (Accessible)
- Up to two persons occupancy available
- ▲ Third person occupancy available
- Up to four persons occupancy available
- ↕ Connecting Stateroom
- ⌘ Adjoining Stateroom

**WHEN IT COMES TO SAFETY, WE'RE LEAVING NOTHING TO CHANCE**



**100% FRESH AIR VENTILATION SYSTEM, NO AIR RE-CIRCULATION**  
 Incoming air is filtered and a dedicated ventilation system redirects air out of the ship to ensure no re-circulation of air between cabins. Air intake and exhaust are on opposite sides of the vessel.

**360° COMPREHENSIVE PREVENTIVE MEASURES/ ENHANCED CLEANING PROCESS**  
 Over 40 health and safety measures cover eight areas of the ship ranging from embarkation and disembarkation, cabins, public spaces, safe food and beverage handling procedures, recreational facilities, ventilation systems, medical services and crew safety.

**PRE-DEPARTURE PROCEDURES AND MEDICAL CENTRE**  
 In addition to mandatory pre-departure ART testing and health declaration, isolated wards are available in Medical Centre. Cabins can be converted into quarantine rooms if required. Doctors and an Infection Control Officer are available on every sailing.

**REGULAR SANITISATION**  
 On-board disinfection and cleaning has been stepped up. All public areas of the ship will be cleaned multiple times throughout the day to ensure a safe cruise for all.